



## iglide<sup>®</sup> piston rings

Easy installation

---

Cost-effective

---

More wear-resistant than PTFE-strips

---

High load capacity

---

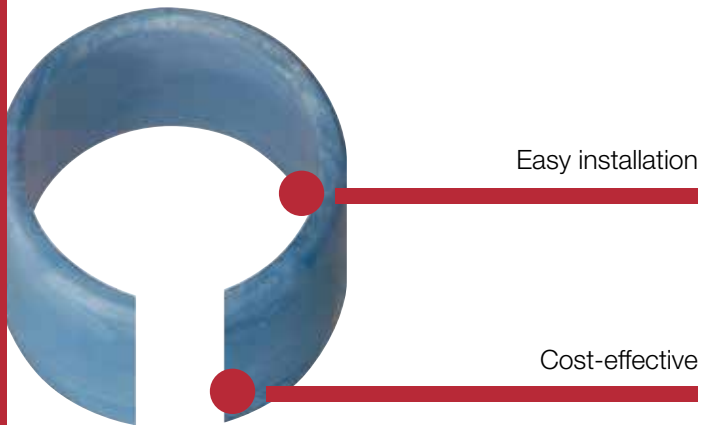
Standard range available stock

---

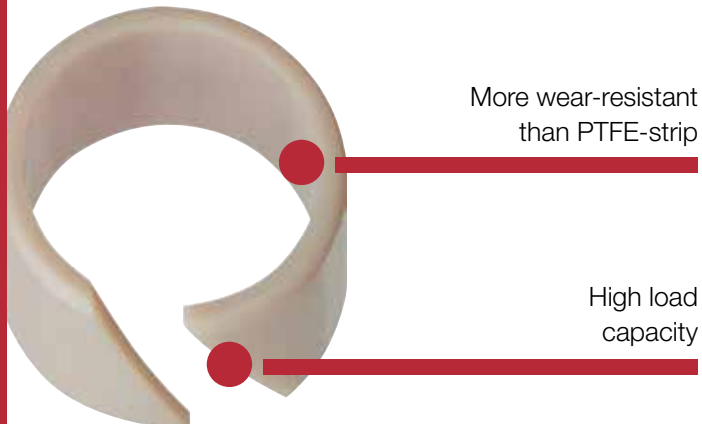


# iglide® piston rings | Advantages

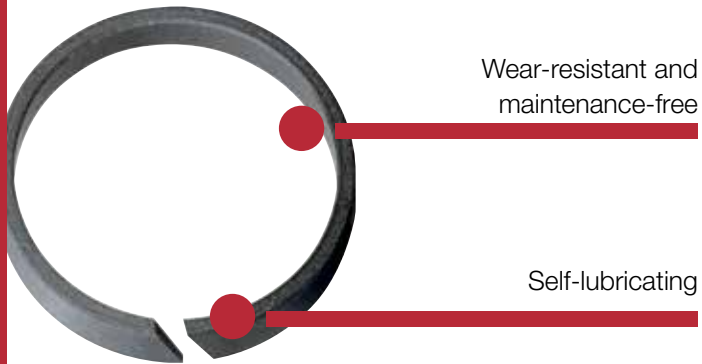
Easy and economic: iglide® piston rings



Easy installation



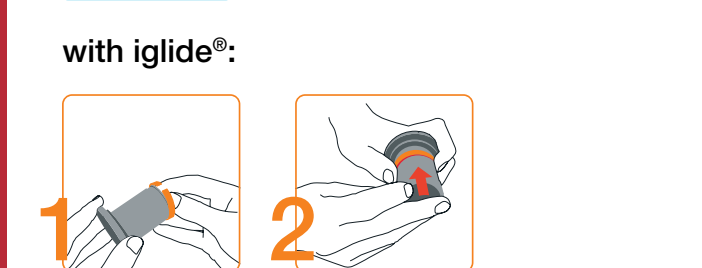
Cost-effective



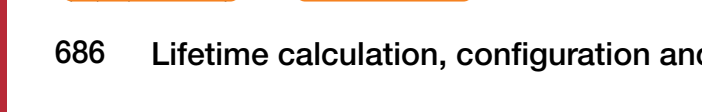
More wear-resistant than PTFE-strip



High load capacity



Wear-resistant and maintenance-free



Self-lubricating

## iglide® piston rings

Why complicate things if you do not need to? Some things can actually be very easy: Replace complex stamped PTFE strips with a single clip-on piston ring, for example in cylinders, control valves and fittings. In addition to the standard iglide® J range, it is also possible to configure your required piston ring sizes from the entire iglide® bearing range.



### When to use it?

- When piston rings with excellent wear properties are required
- When simple assembly is of great importance
- When high edge loads occur
- When tailor-made solutions based on iglide® materials are required



### When not to use it?

- When the piston rings should also act as a seal
- When different diameters should be covered by one part



More Information about iglide® material and technical data **iglide® J** ► **Page 193**



max. +194°F  
min. -58°F

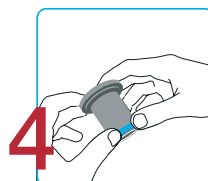
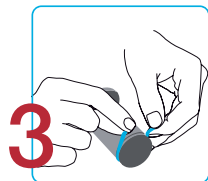
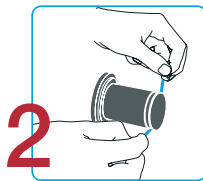
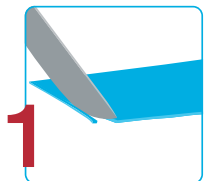


Ø 6–70 mm  
more dimensions on request

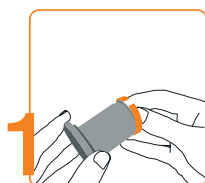


**Available from stock**  
Detailed information about delivery time online.

### Alternative solutions:



with iglide®:



# iglide® piston rings | Product range

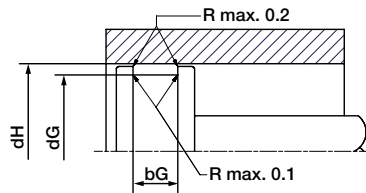
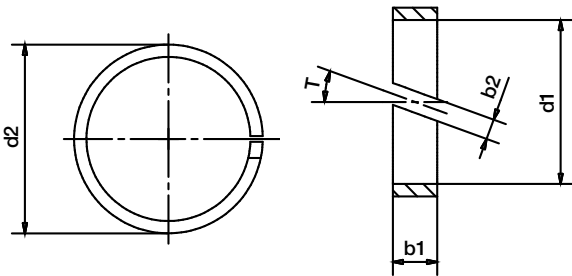
## iglide® J piston rings, from stock

iglide® J is our all-around material when it comes to an outstanding running performance and low coefficient of friction on the broadest range of shafts. The flexibility of iglide® J enables the typical assembly of piston rings using the push over/clip on method. Good media resistance rounds off the range of properties.



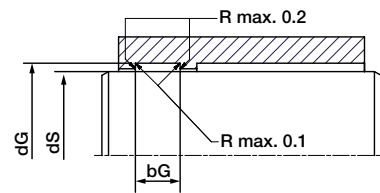
### Order key

Type	Dimensions						
<b>J PR M -06 08 -00 -010 -060</b>							
iglide® material	Piston ring	Metric	Inner-Ø [mm]	Outer Ø [mm]	Cut angle	b2 cut width	Length [mm]



### Installation recommendation for piston

Dimensions [mm]	dG (h-tolerate)	dH (h-tolerate)	bG
Nominal size	dG = d1	dH = d2	bG = b1 +0.2



### Installation recommendation for housing

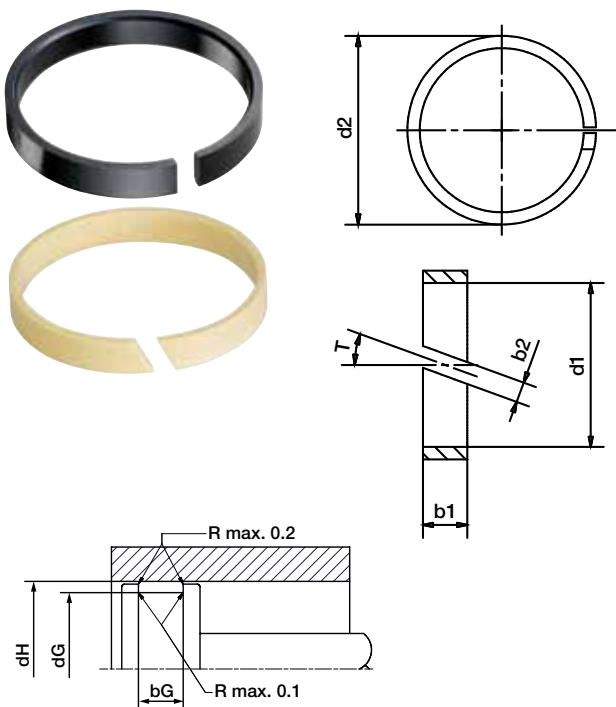
Dimensions [mm]	dS (h-tolerate)	dG (h-tolerate)	bG
Nominal size	dS = d1	dG = d2	bG = b1 +0.2

### Dimensions [mm]

Part No.	d1	d2	T [°]	b2 ±0.5	b1 h13
JPRM-0608-00-010-060	6	8	0	1.0	6
JPRM-0810-00-010-100	8	10	0	1.0	10
JPRM-1012-20-025-054	10	12	20	2.5	5.4
JPRM-1214-20-025-054	12	14	20	2.5	5.4
JPRM-1315-20-025-054	13	15	20	2.5	5.4
JPRM-1416-20-010-100	14	16	20	1.0	10
JPRM-1416-20-010-054	14	16	20	2.5	5.4
JPRM-1618-00-025-054	16	18	20	2.5	5.4
JPRM-1618-20-025-054	16	18	20	2.5	5.4
JPRM-1722-25-025-054	17	22	25	2.5	5.4
JPRM-2023-20-025-054	20	23	20	2.5	5.4
JPRM-2528-20-025-054	25	28	20	2.5	5.4
JPRM-2832-20-010-100	28	32	20	1.0	10

Part No.	d1	d2	T [°]	b2 ±0.5	b1 h13
JPRM-2832-20-010-200	28	32	20	1.0	20
JPRM-2833-25-025-054	28	33	25	2.5	5.4
JPRM-3034-20-025-054	30	34	20	2.5	5.4
JPRM-3539-20-025-054	35	39	20	2.5	5.4
JPRM-3540-25-025-054	35	40	25	2.5	5.4
JPRM-4044-20-025-054	40	44	20	2.5	5.4
JPRM-4550-20-025-054	45	50	20	2.5	5.4
JPRM-4550-00-020-100	45	50	0	2.0	10
JPRM-5055-20-025-054	50	55	20	2.5	5.4
JPRM-5055-00-020-100	50	55	0	2.0	10
JPRM-5863-25-025-095	58	63	25	2.5	9.5
JPRM-6065-20-025-054	60	65	20	2.5	5.4
JPRM-7075-20-025-054	70	75	20	2.5	5.4

In addition to the stock range of iglide® J piston rings, you can also select your desired piston ring using the entire iglide® bearing range. Choose the material best suited to your application. Your piston ring will be delivered within 10 days – to your requirements.



### Installation recommendation for piston

Dimensions	dG	dH	bG
[mm]	(h-tolerate)	(h-tolerate)	
Nominal size	dG = d1	dH = d2	bG = b1 + 0.2

### ! Our material recommendations for special requirements:

- iglide® A181: FDA-compliant ► Page 457
- iglide® A180: FDA compliant ► Page 493
- iglide® J350: >+194 °F ► Page 251
- iglide® H1: Temperature up to +392 °F ► Page 407

**i** In addition to mechanical processing of existing iglide® bearings to piston rings, we also develop custom-made piston ring solutions for your production volume requirements. Please contact us. We will support you with your design and create an appropriate proposal.

### Order key

Type	Dimensions
<input type="checkbox"/> PR M -06 08 -00 -010 -060	
iglide® material	Piston ring
Metric	
Inner-Ø [mm]	Outer Ø [mm]
Cut angle	b2 cut width
	Length [mm]

### Installation recommendation for housing

Dimensions	dS	dG	bG
[mm]	(h-tolerate)	(h-tolerate)	
Nominal size	dS = d1	dG = d2	bG = b1 + 0.2

**🖱️ iglide® piston rings product finder**  
Material selection and individual dimensions made easy. With just a few clicks, the piston ring finder can find the optimum iglide® material and select the appropriate dimensions from the standard catalog range in order to define a piston ring in a customized width.

